



**Lumeta Solar S Tile** is the first roof integrated solar solution that simulates the shape of clay and concrete profiled tiles, resulting in greatly improved roof system functionality and aesthetics.



**Lumeta Solar Flat Tile** integrates with conventional clay and concrete flat tiles, resulting in an aesthetically pleasing solar roof system.

## Features & Benefits:

### Building Integrated PV (BIPV)

Avoids roof penetrations and the need for mounting structures, reducing Balance of System (BOS) costs.

### Integrated Tile Design

Integrates with clay and concrete, flat and profiled tiles, replacing the roof tiles with Lumeta Solar Tiles.

### Designed to Match

Replicates the look of clay and concrete flat and profiled tiles, maintaining the aesthetics of the overall roof system.

### Attractive Colors

Manufactured in the most popular color choices available for clay and concrete flat and profiled tiles.



**Lumeta is a leading developer of Building Integrated Photovoltaic (BIPV) products.**

With over 30 years of experience in the roofing industry, we've been able to develop innovative solar modules that integrate into a variety of commercial and residential roof systems. Lumeta solar modules are as aesthetically pleasing as they are highly functional.

## Electrical Characteristics

Peak Power (Pmax)*	28 Wp (+/- 5%)
Maximum Power Point Voltage (Vmpp)*	5.9 V
Maximum Power Point Current (Impp)*	4.9 A
Open Circuit Voltage (Voc)*	7.4 V
Short Circuit Current (Isc)*	5.2 A
Solar Cells:	12 Monocrystalline Silicon 125 x 125 mm

\*Measured at Standard Test Conditions (STC): Irradiance 1000 W/m<sup>2</sup>, AM 1.5, Cell Temperature 25°C

## Roof Compatibility

Roof Slope:	3:12 (14°) or greater
Roof Tiles:	Concrete Flat and Profiled Tiles
	Clay Flat and Profiled Tiles

## Warranty

5-year repair or replacement warranty
12-year / 25-year limited peak power warranty

## Certifications

UL 1703 for use in systems up to 600 V, CSA listed
Fire Rating: Class A Unlimited Slope

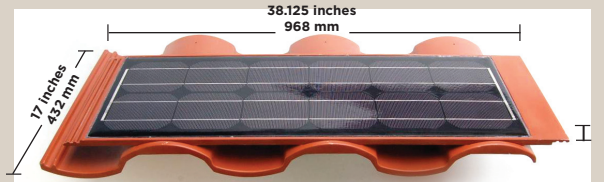
## Patents

US Patents 7,506,477 and 7,509,775 issued
Additional US and/or international patents may apply

## Notes

Consult Installation Manual for detailed instructions
Specifications are subject to change without notice

## Solar S Tile



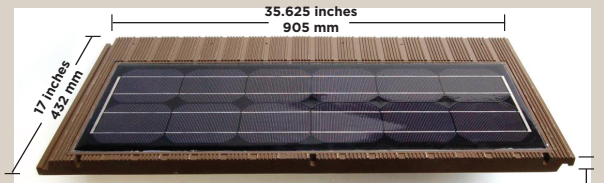
**Length:** 17 inches (432 mm)

**Width:** 38.125 inches (968 mm)

**Height:** 3 inches (76 mm)

**Weight:** 18 lbs (8.2 kg)

## Solar Flat Tile



**Length:** 17 inches (432 mm)

**Width:** 35.625 inches (905 mm)

**Height:** 1.375 inches (35 mm)

**Weight:** 19 lbs (8.6 kg)

## Dealer Information